

Welcome to the third edition of Formeta Design Magazine—an archive of our evolving vision, strategy, and projects across industries over the last decade.

This issue features a curated selection of our projects developed between 2012 and 2025. Projects that were completed after the release of our first issue are specially marked throughout the magazine.

To explore more of our work, feel free to visit our website.

We hope you enjoy this journey through our design evolution.

Formeta Design in Numbers

Over the past 13 years, we've partnered with bold innovators and industry leaders to design more than 450 products that blend cutting-edge technology with purposeful design. From everyday tools to complex systems, our work aims to elevate human experience through form, function, and foresight.



The Way We Design

"Every Form, a Letter. Every Product, a Word."

We believe that design is a language. Every curve, interface, texture, and detail is a letter in a larger narrative. When shaped with intention, these forms become products – words that speak to people, solve problems, and move industries forward.

At Formeta, we don't just design objects. We craft meaning.

Good design is not decoration – it's direction. It solves problems, drives innovation, and adds lasting value.

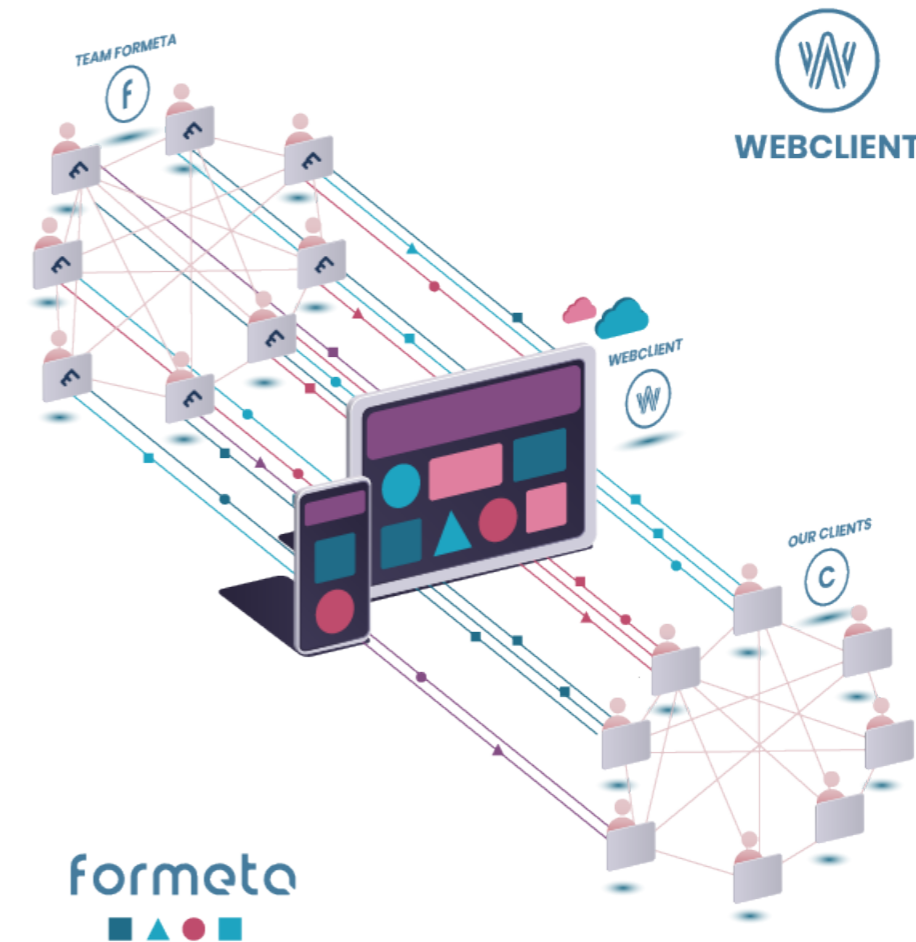
We bring ideas to life by blending aesthetics with usability, creativity with engineering, emotion with function.

Whether physical or digital, simple or complex – every product we design tells a story.

We partner with forward-thinking brands to build products that are not only seen and used, but also remembered.

This is not just what we do. This is who we are.

How We Work



Your Online Design Department

At Formeta Design, we aim to integrate the insights of our clients and business partners into our design outcomes with a contemporary and strategic approach.

Our diverse service offerings make the design process accessible at all levels—whether for a startup or a global company—while delivering solutions that add real value to products, services, and brand identities.

By combining interdisciplinary expertise with systemized creativity, we help our clients turn ideas into meaningful design results that are both functional and emotionally resonant.

CASE STUDY

B2B eSooter – Unibody

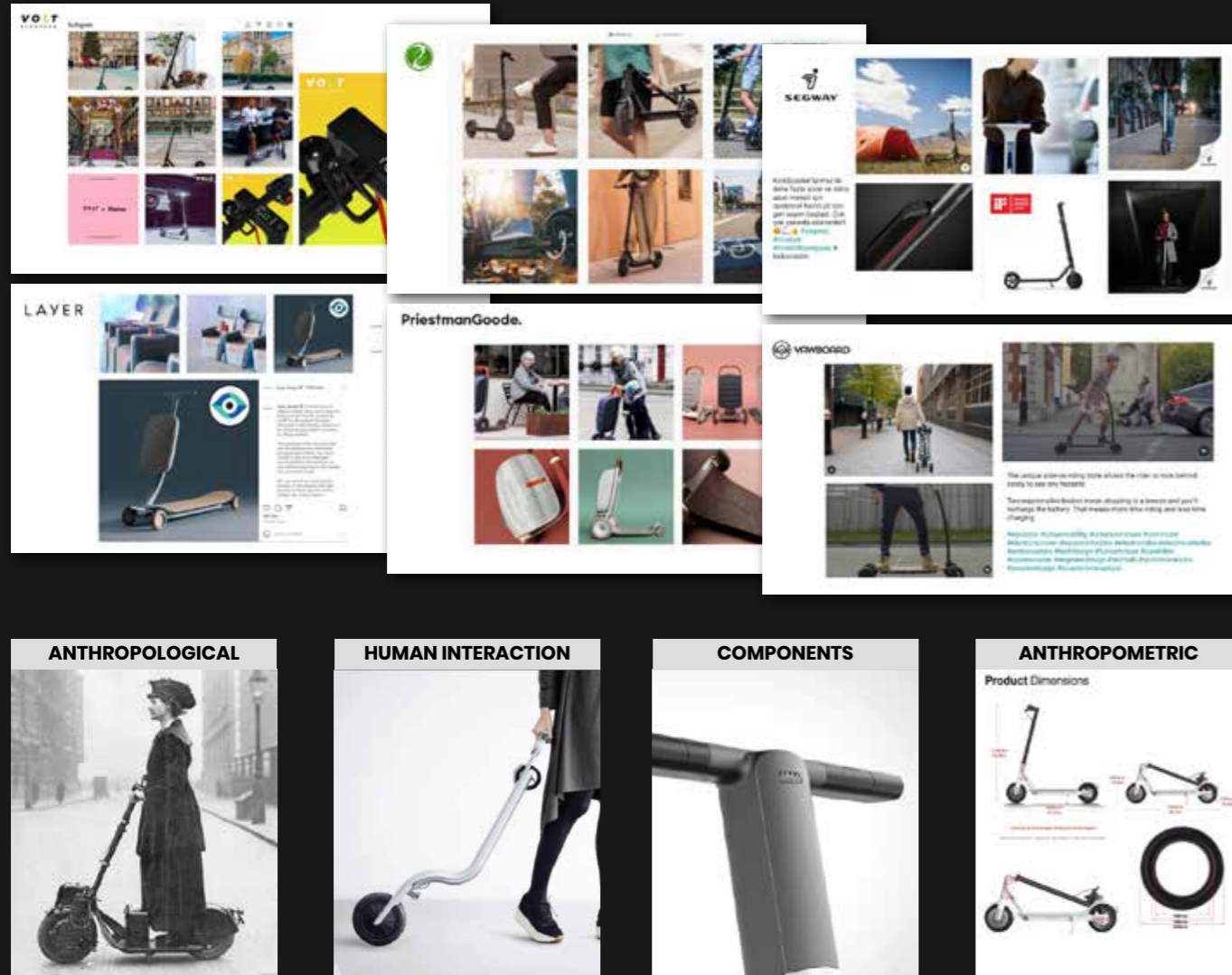


This project exemplifies our holistic approach to product development, combining market research, ergonomic analysis, and advanced visualization to deliver a user-centric, manufacturable solution.

From benchmarking and geometric analysis to CMF studies and 3D modeling, the Unibody eSooter embodies the integration of form, function, and brand identity. The project also included modular part design and prototyping, validating our concept through iterative user testing.

The result is a refined mobility solution tailored for B2B operations, with high durability, easy maintenance, and a seamless riding experience—all encapsulated within a single unibody frame.

Benchmarking and Research	8
Geometric Analysis	9
CMF and Trends	10
ID Sketching and Form Finding	11
3D CAD Modelling and Visualization	12
Alternatives and Segmentation	13
Part Design	14
Prototyping and Testing	15

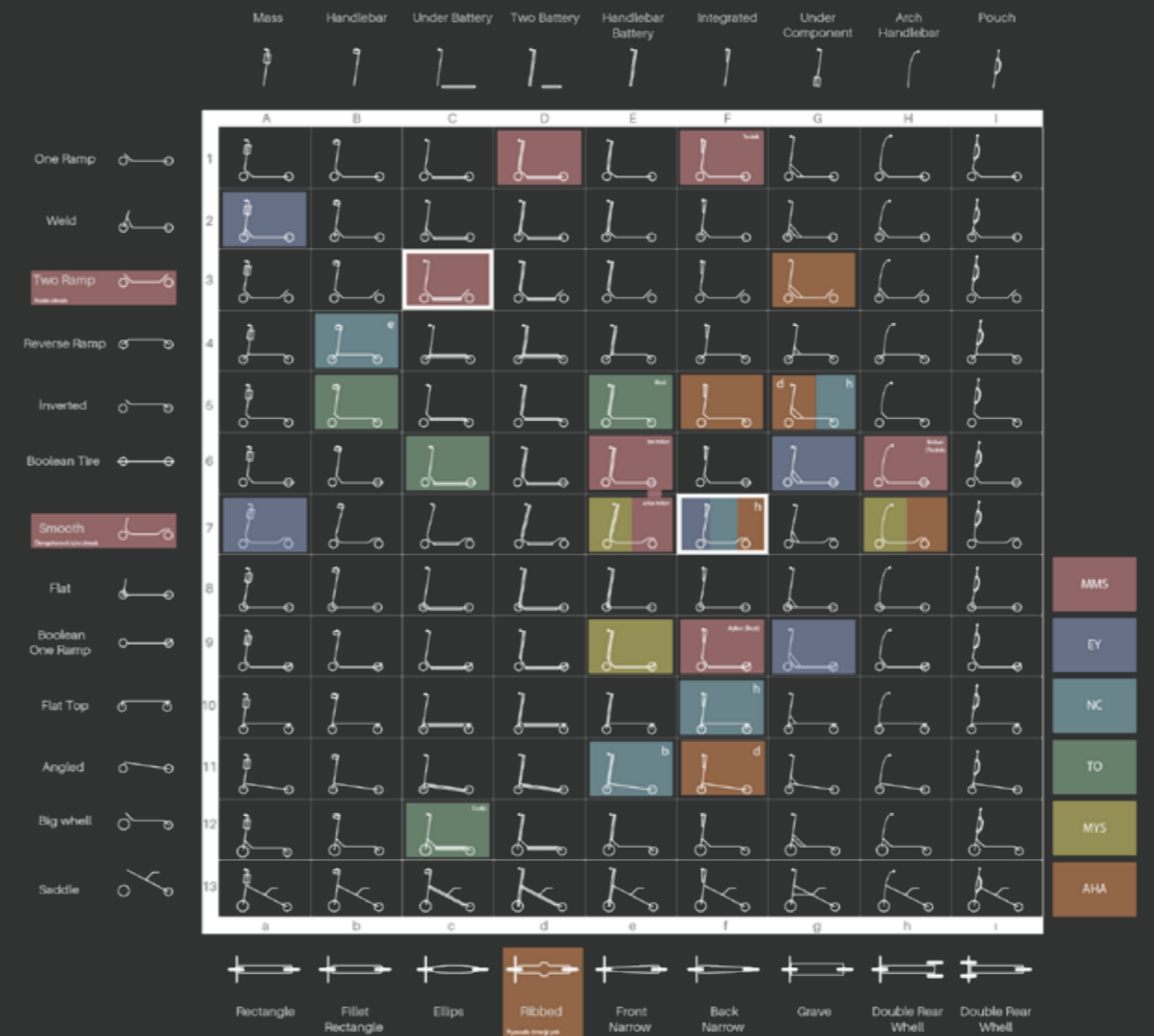


Benchmarking and Research

Benchmarking and research are essential steps in the industrial design process, offering valuable insights into market dynamics, user preferences, and competitor strategies.

At Formeta Design, we conduct comprehensive benchmarking to assess similar products, focusing on their performance, aesthetics, usability, and customer feedback. Our research methods combine both quantitative and qualitative tools, including market surveys, user interviews, and field observations.

This approach helps us identify unmet needs and innovation opportunities—ensuring that the solutions we develop are not only visually distinctive but also aligned with market demands and user expectations.

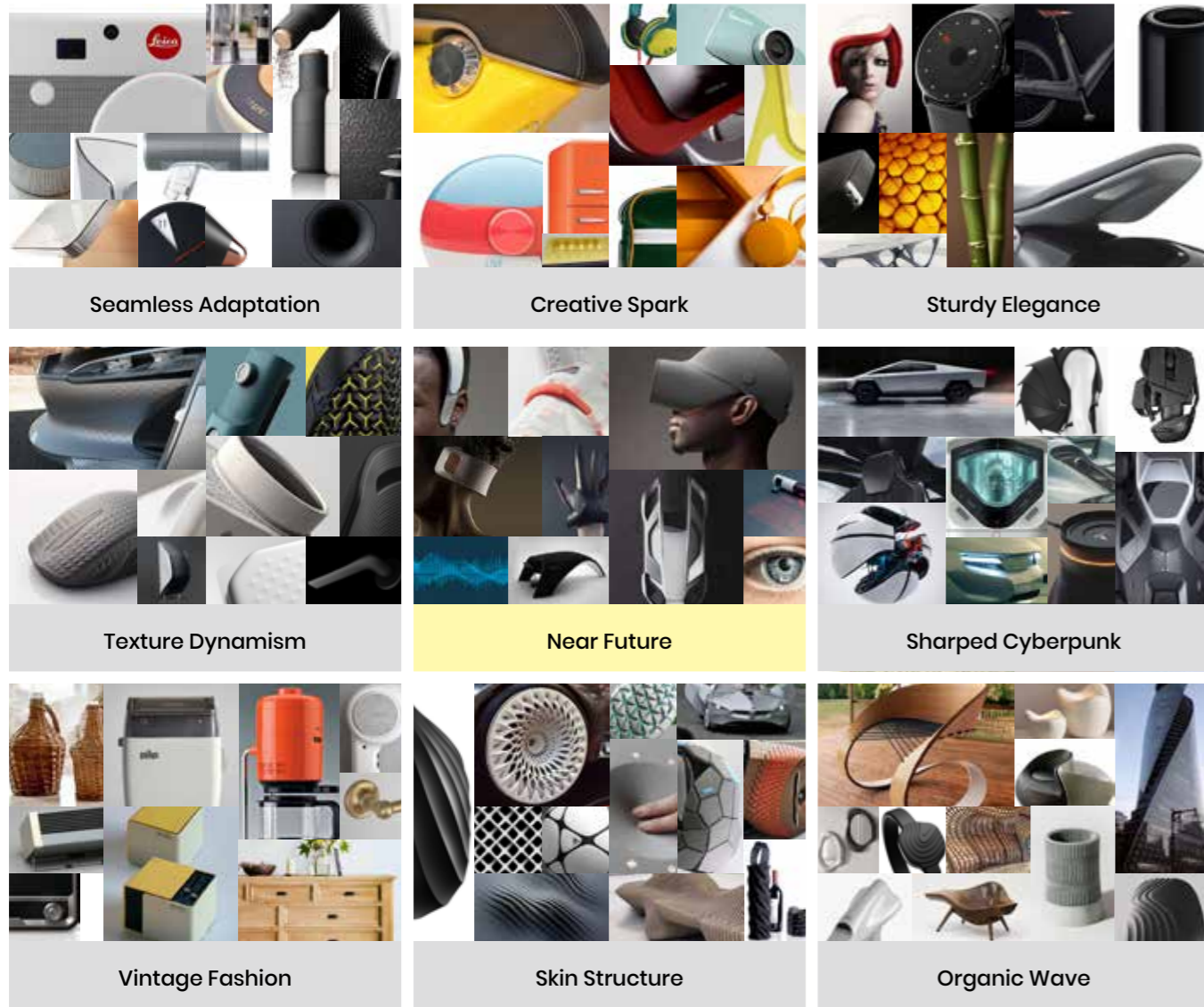


Geometric Analysis

Geometric analysis plays a pivotal role in ensuring that each design is optimized for functionality, aesthetics, and manufacturability.

At Formeta Design, we apply advanced geometric evaluation techniques to examine the dimensions, symmetry, and proportions of products. These methods allow us to strike a balance between technical feasibility and visual impact.

Through a combination of traditional sketching and digital parametric modeling, we create designs that are structurally sound, ergonomic, and suitable for mass production. Geometric analysis minimizes error, enhances usability, and streamlines manufacturing from concept to reality.



CMF and Trends

Color, Material, and Finish (CMF) strategies are integral to how users perceive and connect with a product. At Formeta Design, we follow current trends and technological advancements to define CMF palettes that are both relevant and forward-thinking.

By aligning material choices with user expectations and brand values, we enhance sensory appeal and emotional engagement. Our CMF approach also supports sustainable material selection, production efficiency, and long-term market relevance.

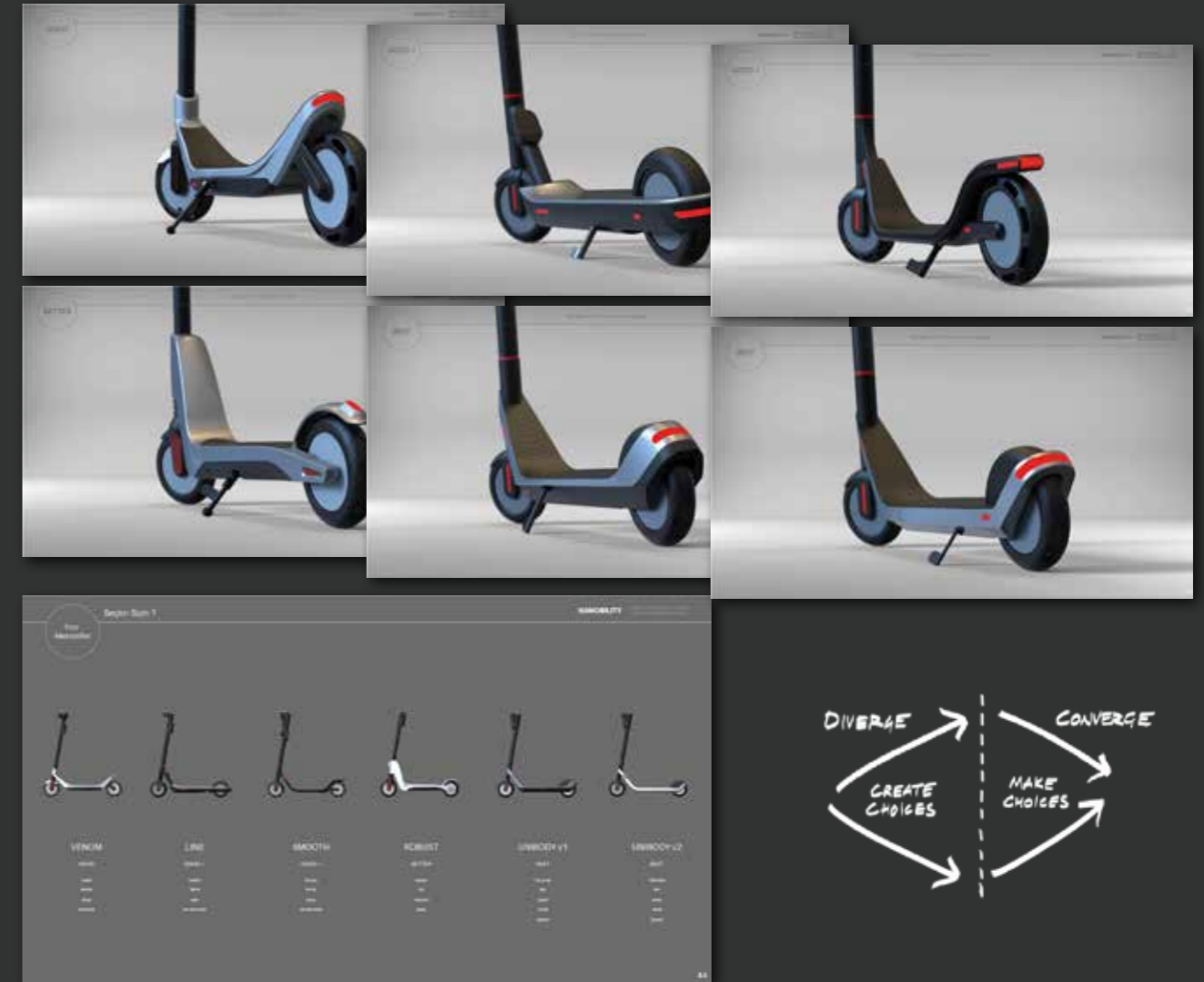
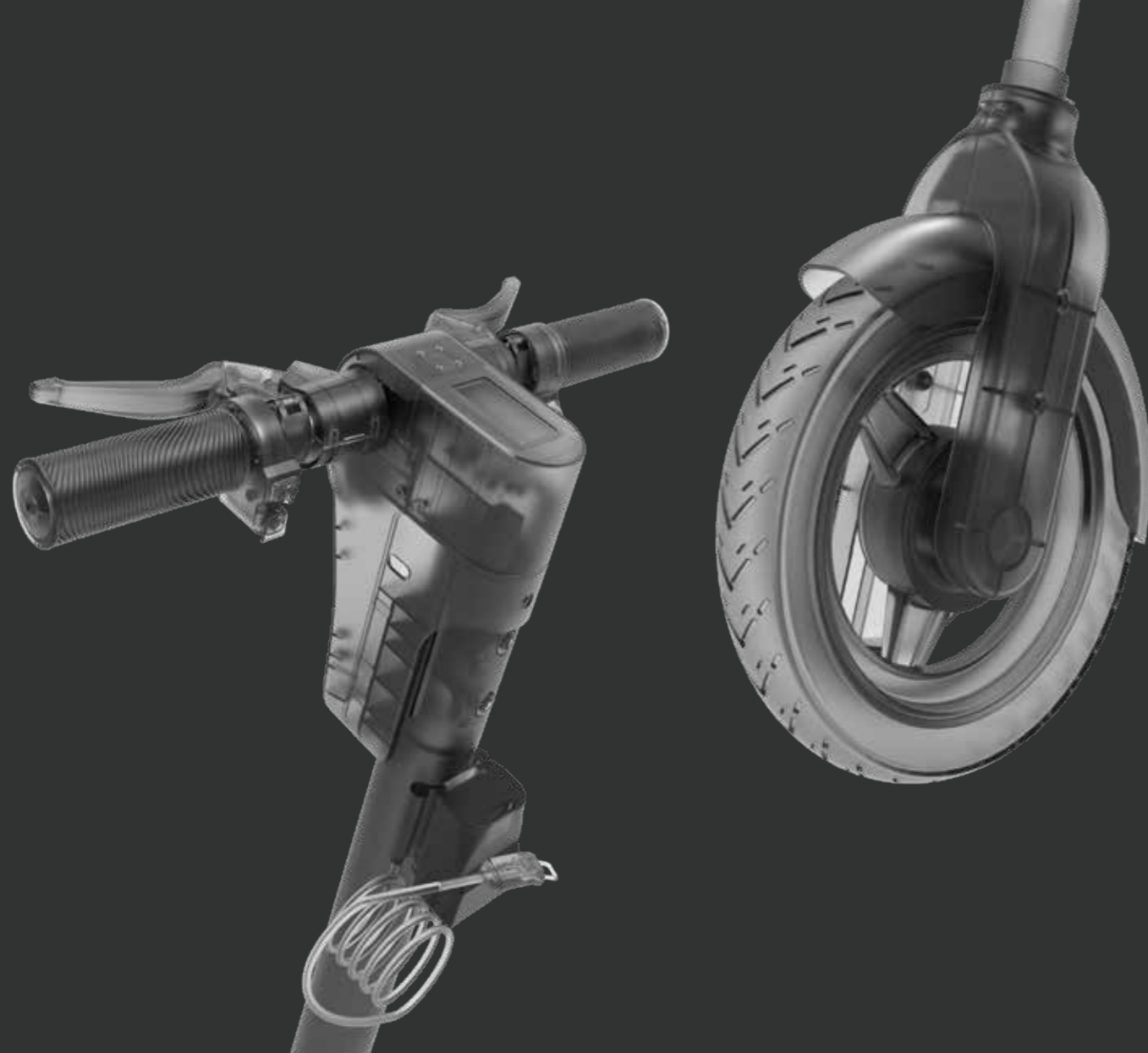
We apply these same principles to both physical and digital product experiences, ensuring continuity across hardware and software design.

ID Sketching and Form Finding

Sketching and form development are foundational steps in the design process. They allow our team to explore concepts, iterate quickly, and translate ideas into tangible forms.

At Formeta Design, we utilize hand sketches, digital illustrations, and CAD tools to visualize alternatives, refine aesthetics, and evaluate functionality. This iterative method fosters both creativity and problem-solving.

Form finding focuses on identifying the most effective shape for the product's intended function and user interaction—balancing emotional resonance with technical performance.



3D CAD Modeling and Visualization

3D CAD modeling is at the core of modern industrial design, enabling designers to simulate products with precision and realism before production.

At Formeta Design, we use advanced CAD tools to model every detail of a product, from its internal structure to external surfaces. These models are analyzed for performance, ergonomics, and manufacturability.

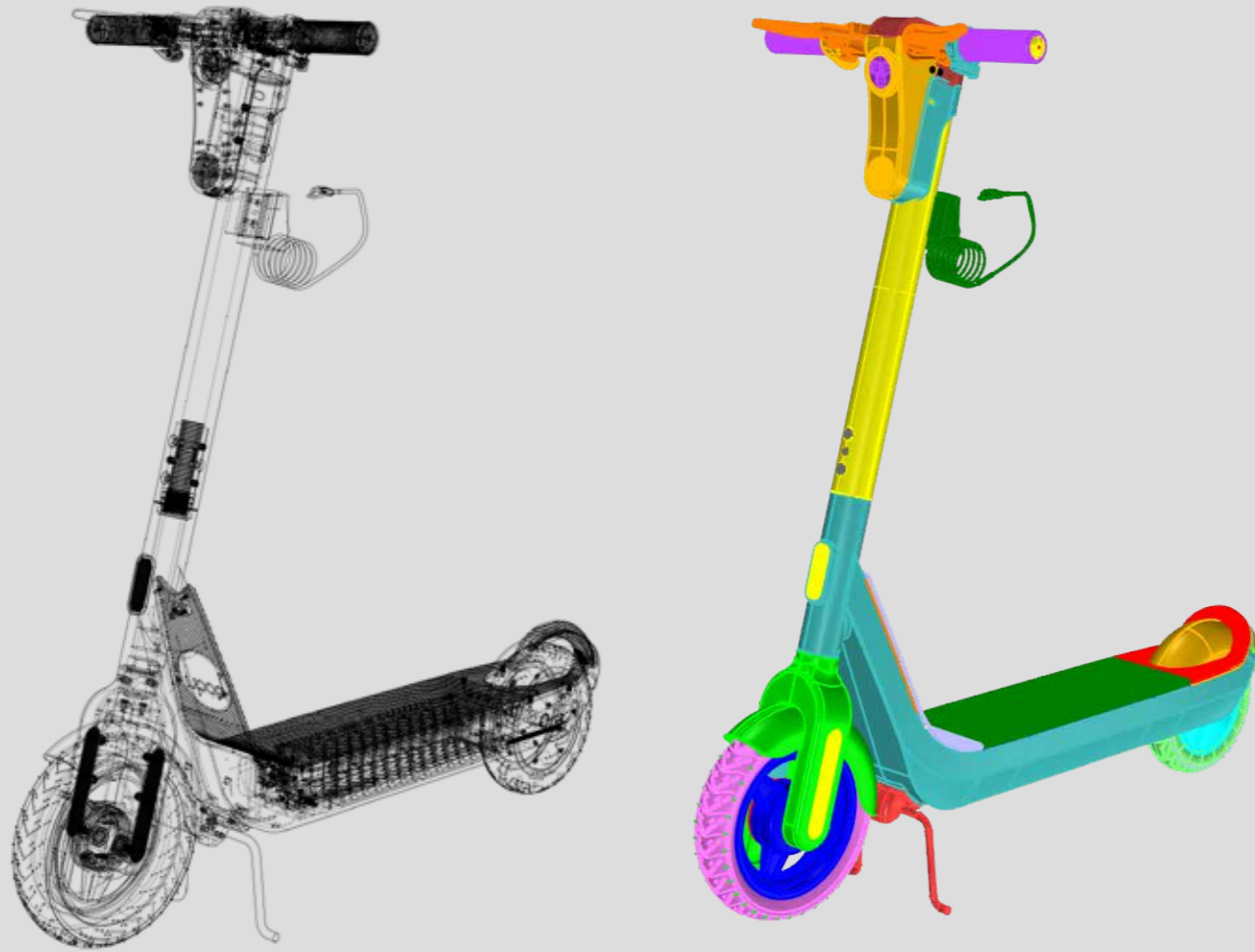
Our visualization process includes high-resolution renderings and virtual prototyping, providing stakeholders with clear insights into the final product—accelerating decision-making and reducing development time.

Alternatives and Segmentation

Exploring alternatives and segmenting user needs are critical to delivering tailored design solutions.

We develop multiple concept directions to assess various functional and emotional design responses. Simultaneously, we segment the target market to align designs with specific user groups and their distinct preferences.

This approach allows us to create modular and flexible solutions while maintaining consistency and identity. It ensures broader usability without sacrificing focus.



Part Design

Part design bridges concept development with manufacturing reality. At Formeta Design, we pay close attention to the structural and mechanical properties of each component to ensure proper fit, durability, and cost-effective production.

Using advanced CAD tools and material simulation, we define part interfaces, fastening systems, tolerances, and assembly methods. This stage is crucial for transforming elegant forms into functional, manufacturable products.

Whether designing plastic injection-molded parts, sheet metal enclosures, or composite structures, our part design process integrates technical requirements with the original design intent—ensuring seamless production and long-term reliability.



Prototyping and Testing

Prototyping and testing are vital steps in validating the effectiveness and feasibility of a design.

We employ both rapid prototyping and precision 3D printing to evaluate form, function, and user interaction. Testing is performed in real-world scenarios to assess durability, performance, and usability.

This iterative cycle of building and refining enables us to identify problems early, improve design quality, and ensure a smoother transition to production. The result is a well-rounded product, optimized for both user experience and manufacturing.



HEALTHCARE SOLUTIONS

- Medical Device Design
- Hygiene-Centric Interfaces
- Compact Electronics Integration
- Regulatory-Aware Engineering



SMART TRANSPORTATION

- Mobility Design
- Ergonomics & User Scenarios
- Assembly Optimization
- CMF Development



INDUSTRIAL EQUIPMENTS

- Robust Housing Design
- UX for Control Panels
- Modular Part Strategy
- Service Accessibility Design



CONSUMER GOODS

- Market-Driven Form Development
- Tactile Experience Design
- Packaging Integration
- Design for Manufacturability



DIGITAL SYSTEMS

- Interface Architecture
- Visual Hierarchy Design
- Cross-Platform Adaptation
- Custom Interaction Models



HOME APPLIANCES

- Product Architecture
- Interface Integration
- Surface Detailing
- Prototyping Support

Industries

At Formeta Design, we take pride in our versatility and deep expertise across a wide range of industries.

From home appliances and healthcare to smart mobility and industrial technology, we develop design strategies that address the specific demands of each industry.

Our diverse portfolio showcases our ability to adapt to varying contexts—delivering solutions that are not only functionally effective but also emotionally engaging.

With over a decade of experience, we know that great design drives real-world impact. Our multidisciplinary approach blends creativity with engineering precision, resulting in products that enhance usability, elevate user experience, and stand out in competitive markets.

Our multidisciplinary approach blends creativity with engineering precision—transforming complex challenges into functional, human-centered design solutions.



HEALTHCARE SOLUTIONS

In healthcare, design is not only about aesthetics—it's about safety, empathy, and performance. At Formeta Design, we create medical devices and digital solutions that support both professionals and patients through intuitive, user-centered design.

We prioritize usability, regulatory compliance, and accessibility, ensuring that every product is functional, safe, and easy to operate.

Our experience spans physical and digital healthcare systems, always focusing on enhancing efficiency and patient care. With a deep sense of responsibility, we design for better outcomes—where innovation meets compassion.





In Production

INFANT TAG - RFID Healthcare System

INFANT TAG is an RFID-based hospital safety system developed with Borda Technology to prevent infant abductions and ensure proper newborn identification. The system includes paired mother-infant tags, nurse badges, and reader units—all linked via RTLS (Real-Time Location System) for continuous tracking.

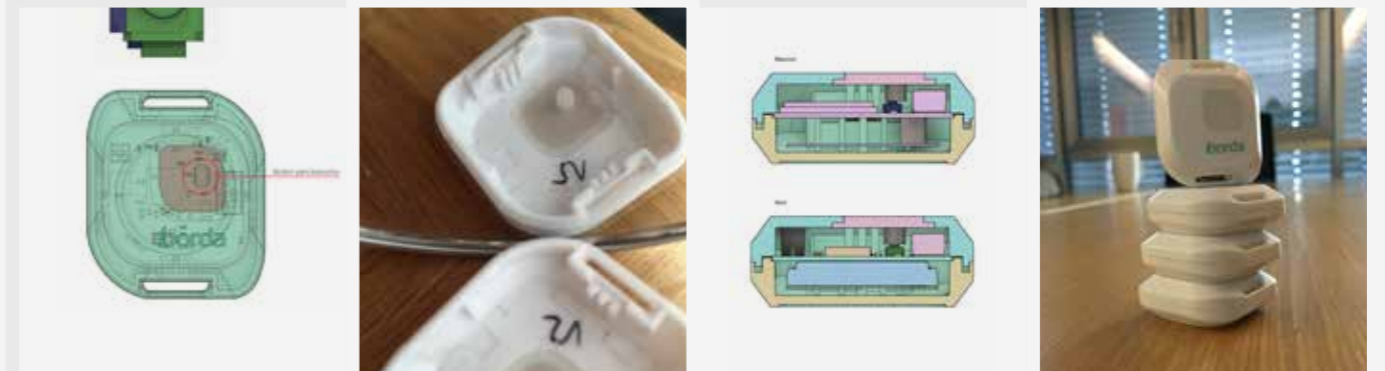
Color-coded visual indicators and icon-based graphics on each tag ensure clarity and fast recognition by staff.

Emergency paging buttons are embedded in both infant and mother tags for direct contact with medical teams.

Formeta Design oversaw the system's industrial design and prototyping—creating a cohesive, intuitive solution that raises hospital safety standards for newborn care.



formeta

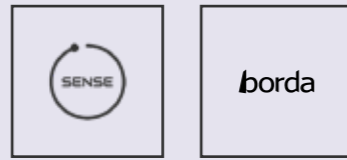


Interface Screenshots



Infant Tag & Mother Tag with their stand





Internal Tool

SENSE - Asset Tracking App & IoT System

SENSE is an IoT-powered asset tracking solution developed by Formeta Design for Borda Technology. It monitors real-time environmental data such as temperature, humidity, air quality, orientation, and device location—making it ideal for smart infrastructure and HVAC applications.

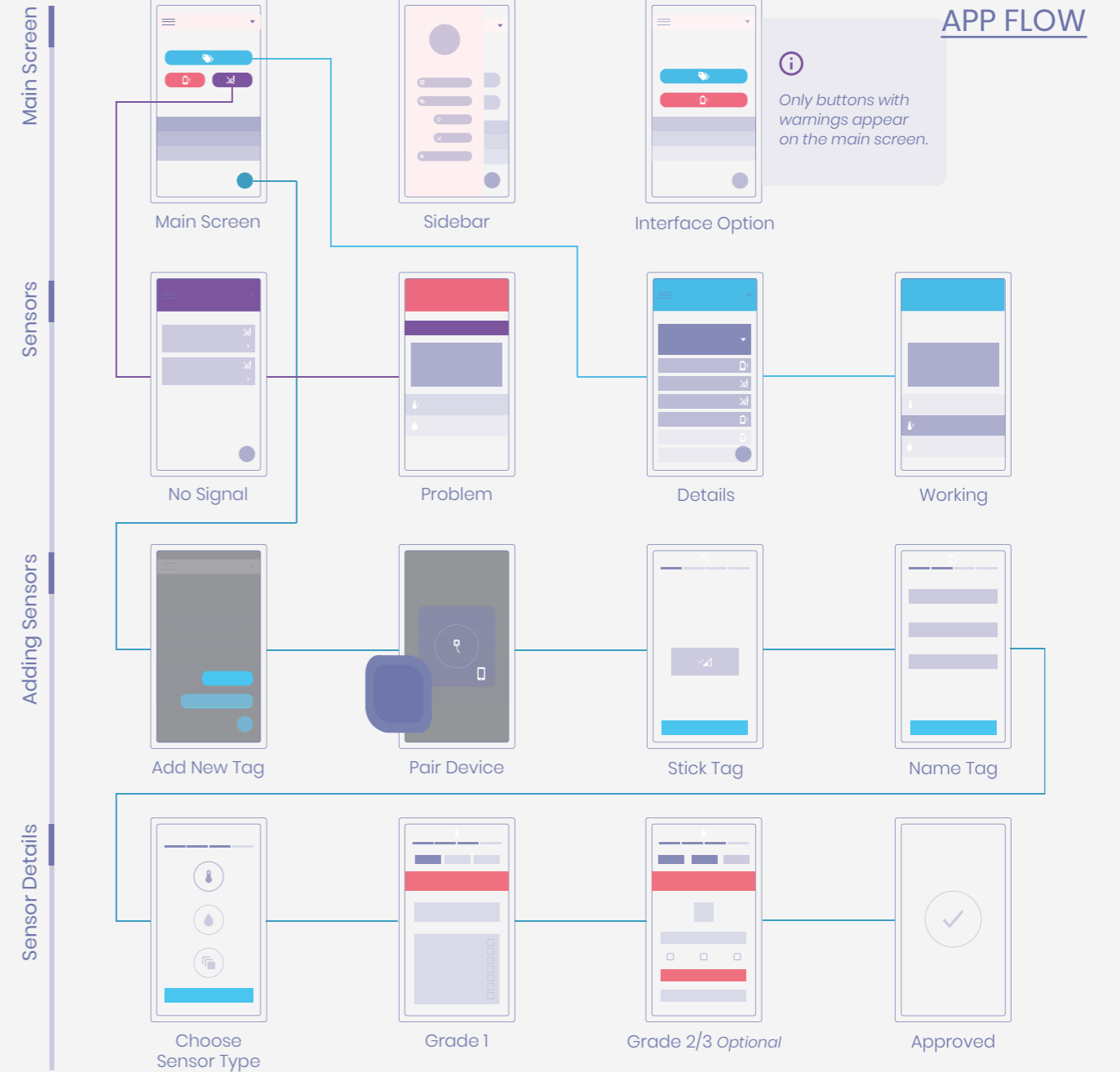
The system delivers instant alerts when preset thresholds are exceeded, enabling users to act before issues escalate.

Formeta Design handled both software and hardware integration, focusing on seamless user experience and compact form.

SENSE merges responsive control with intuitive design, offering an essential tool for industries where precision, speed, and oversight are critical.



formeta





In Production

ASSET TAG - IoT Edge Device for Smart Tracking

Developed with Borda Technology, ASSET TAG is an IoT edge device designed to optimize asset tracking across complex environments. Engineered for Industry 4.0, it combines modular hardware with an adaptable interface system—featuring a replaceable membrane surface that allows for cost-effective customization across sectors.

The minimal exterior supports easy mounting and detachment, making it ideal for use in hospitals, factories, and logistics systems.

By pairing sleek, universal design with scalable IoT performance, ASSET TAG delivers precision tracking while remaining flexible to future upgrades. Expanded: Its discreet footprint allows it to integrate naturally into existing infrastructures. ASSET TAG proves how smart design can simplify complexity without sacrificing performance.





In Production

LOCATOR - Companion IoT Device

LOCATOR is a companion IoT device designed by Formeta Design for Borda Technology to enable seamless communication between asset tags and central systems. Serving as a bridge in smart tracking infrastructures, it ensures reliable data flow and system stability.

The device features a modular shell that discreetly accommodates an optional antenna—designed to adapt across various ceiling types without compromising aesthetics.

Compact, intelligent, and installation-friendly, LOCATOR merges technical precision with refined form. Developed through close collaboration and iterative prototyping, it reflects Formeta Design's commitment to making backend technology visually integrated and operationally effortless.



formeta





Market Ready

AURA - Hearing Aid Device

AURA is a hearing device concept developed by Formeta Design to rethink how assistive technology fits into users' daily lives. With a sleek, minimal form factor, AURA offers enhanced discretion and comfort—prioritizing both function and emotional acceptance.

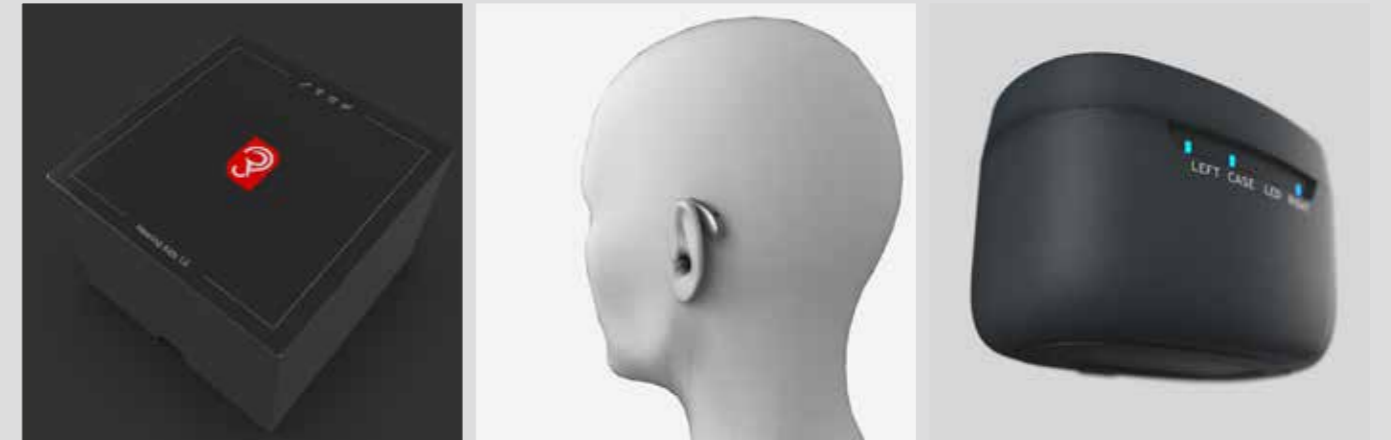
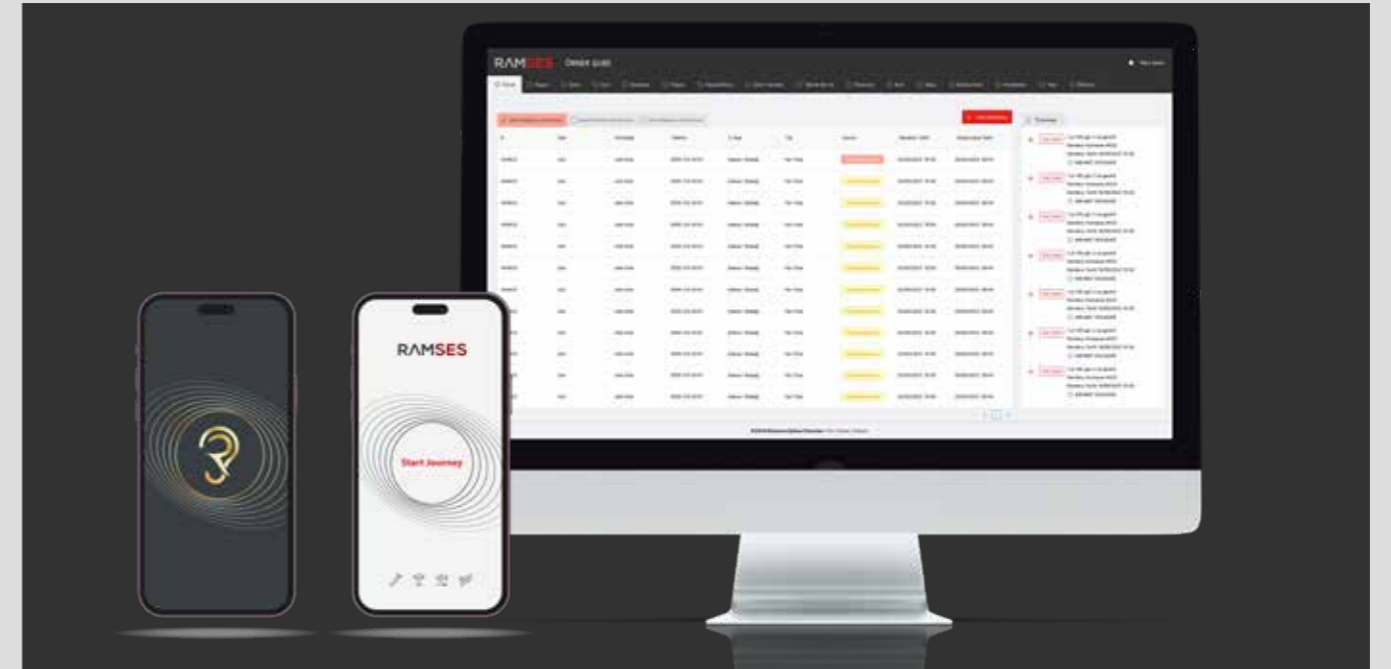
Its ergonomic curve follows the natural shape of the ear, while advanced controls and connection features are intuitively positioned for effortless use.

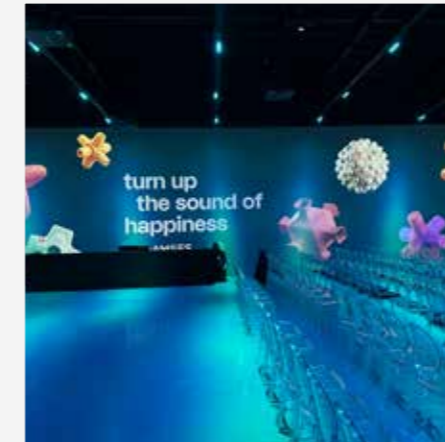
Designed with a human-centered approach, AURA avoids the clinical appearance of traditional hearing aids—offering a more integrated, lifestyle-oriented product.

It reflects Formeta Design's focus on accessibility, elegance, and user dignity within medical technology.



formeta







In Production

T-ROX - Dental 3D Printer

Developed with Tolard Technology, the T-ROX Dental DLP 3D Printer introduces a new benchmark in dental printing by merging precision with style. Its unique upward-opening mechanism, activated via motion sensor, offers intuitive access while adding a futuristic edge.

Angled surfaces, seamless glass integration, and a carefully positioned UI screen ensure a smooth user experience. Internally, it delivers top-tier performance for high-precision dental applications.

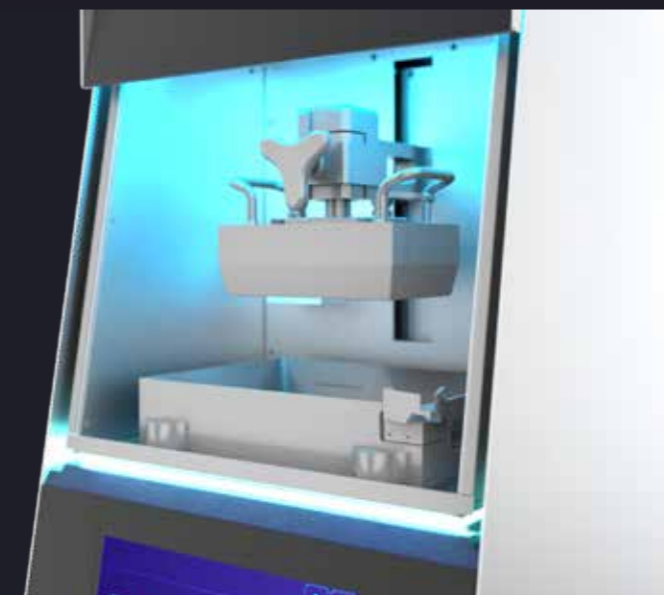
T-ROX balances industrial performance with refined design, making it not only efficient but also aesthetically elevated—suitable for modern clinics that value both form and function.

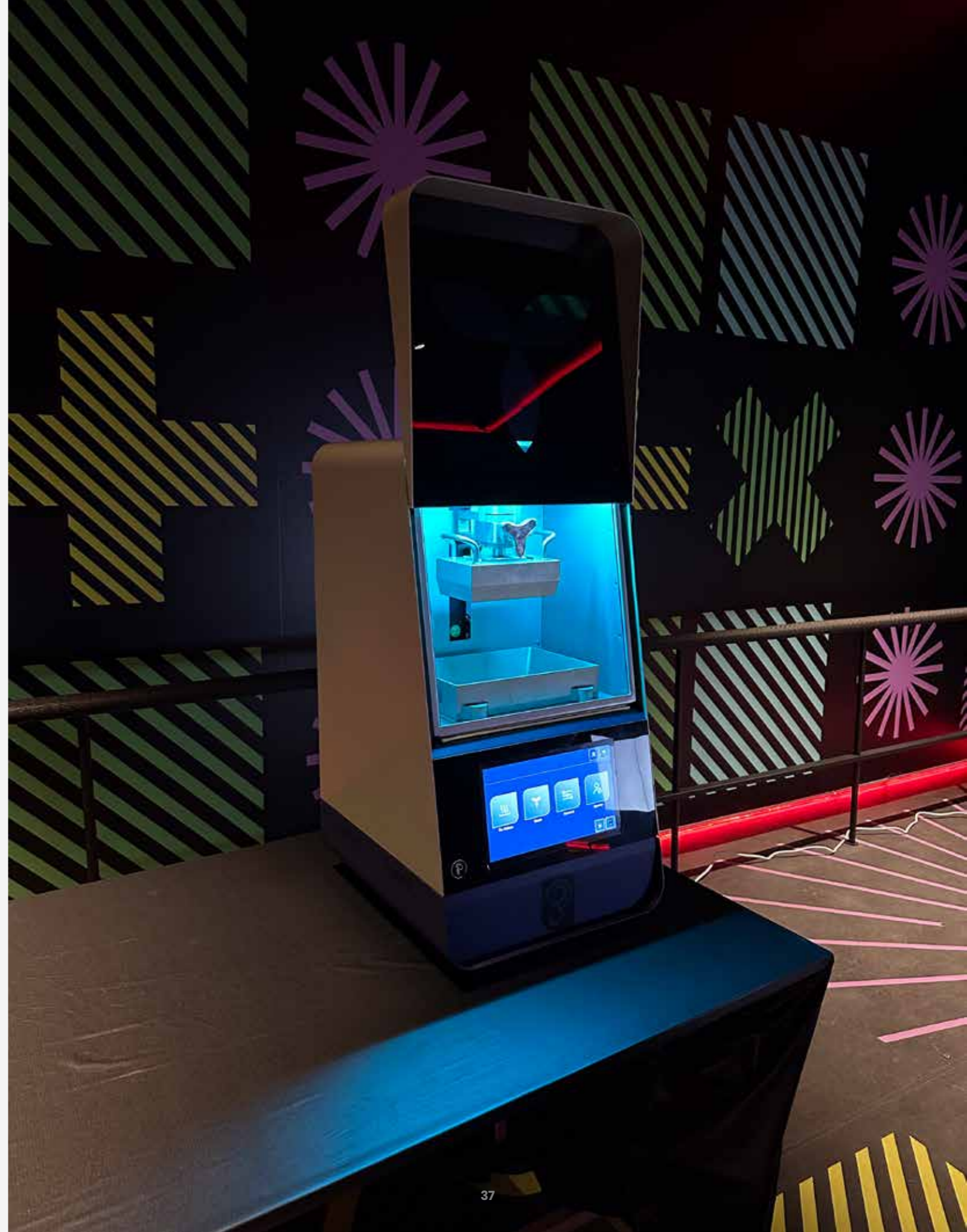


formeta



Interface Screenshots







In Production

PEARL - Retainer Case for Aligners

PEARL is a premium retainer case designed for Orthero, a brand offering clear dental aligners as an alternative to traditional braces. Developed by Formeta Design, the case protects aligners while elevating the user experience with an elegant, pearl-inspired form.

Compact and stylish, PEARL moves beyond medical utility—resembling a fashion accessory that users can carry confidently.

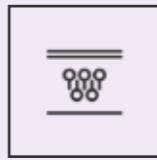
Its organic shell form reflects Orthero’s brand values of comfort, clarity, and modernity.

As part of a long-term design partnership, PEARL reinforces Formeta Design’s ability to combine brand identity, aesthetics, and everyday usability in personal healthcare products.



formeta





Internal Tool

CLIENCHECK - Doctor Web Portal

CLIENCHECK is a digital ecosystem developed for Orthero to help orthodontists and dentists manage clear aligner treatments more effectively. Designed by Formeta Design, the platform includes a doctor web portal, patient tracking interface, and companion apps for both professionals and patients.

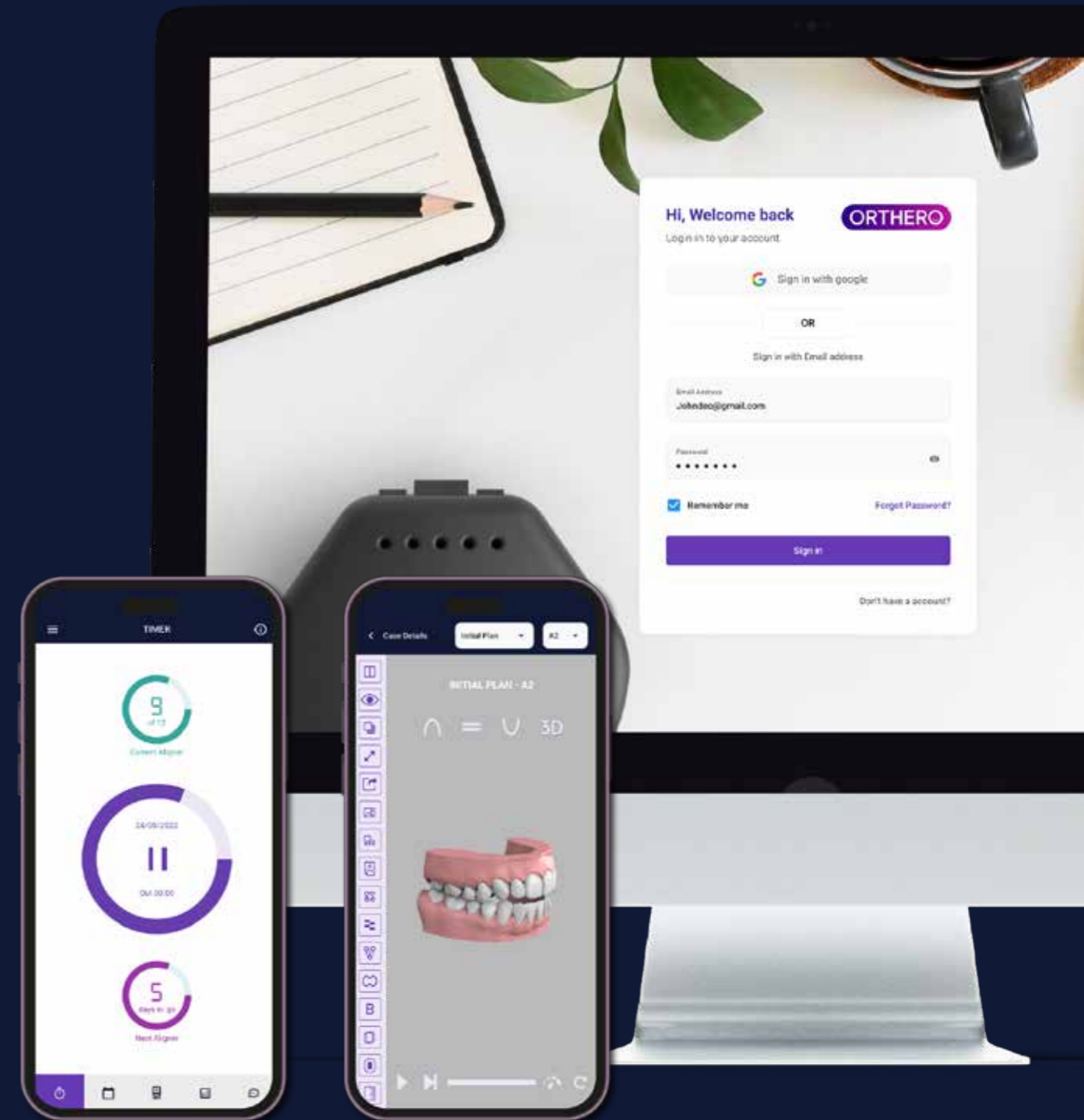
The system enables doctors to view 3D dental plans, monitor progress, and streamline clinical workflows.

With an intuitive UI/UX structure, the platform improves treatment efficiency and communication across stakeholders.

CLIENCHECK demonstrates how healthcare tech can merge clinical precision with user-centric design—enhancing both patient outcomes and the day-to-day experience of practitioners.



formeta

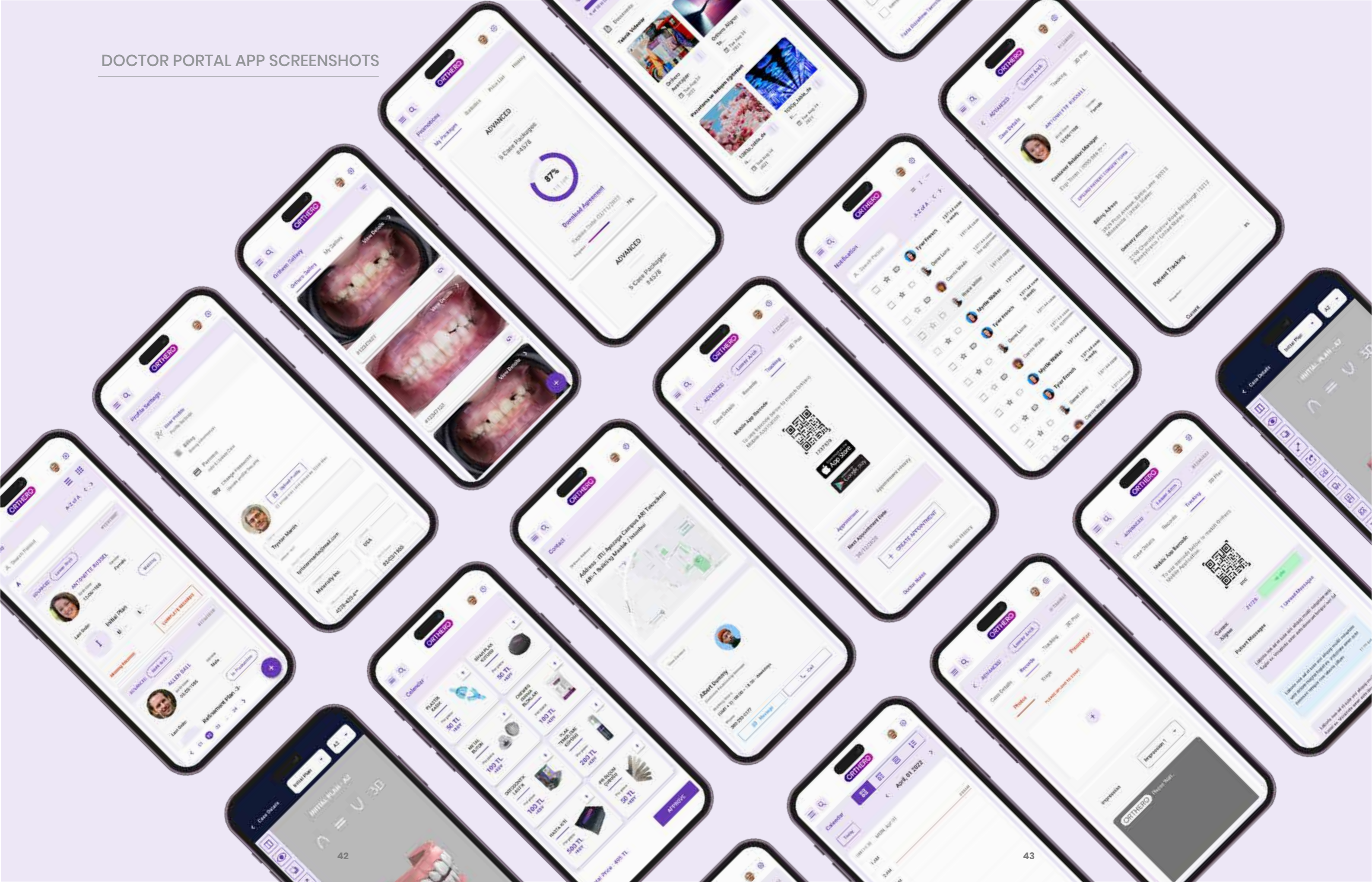


Patient App

Doctor Portal App

Clinic Portal Web

DOCTOR PORTAL APP SCREENSHOTS





GHANI



Market Ready

GHANI - Travel Neck Support

GHANI is a portable neck support device designed to enhance comfort during long trips by improving posture and reducing strain. Developed with ergonomic precision, it supports the natural alignment of the head and neck—offering relief during extended rest or travel.

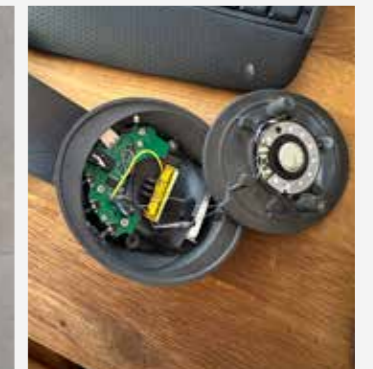
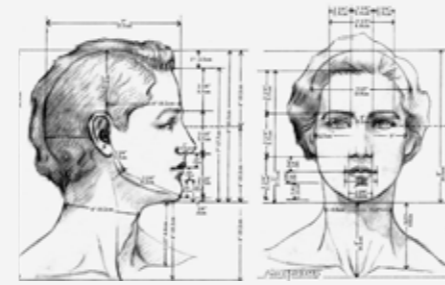
A built-in Bluetooth speaker adds an immersive relaxation element, allowing users to listen to music or calming audio.

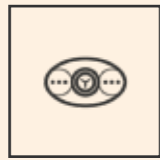
Its foldable form compacts to headphone size, making it easy to carry and store.

GHANI blends anatomy-conscious support with audio functionality—offering a smart solution for travelers seeking comfort, health, and entertainment in one compact product.



formeta





DORMIO



In Production

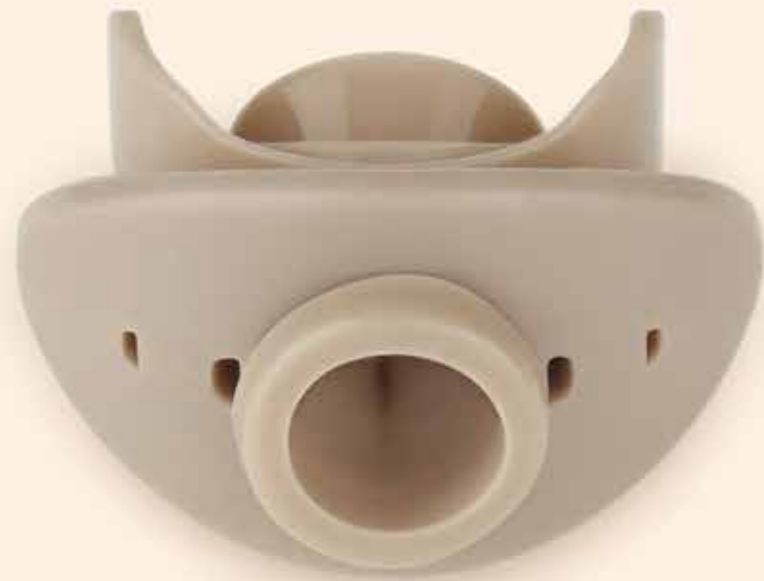
DORMIO - Intraoral Device for Sleep Apnea

Developed with Respo Gadgets, DORMIO is an innovative intraoral device designed to combat obstructive sleep apnea and reduce snoring. Formeta Design reimagined the product as an “adult pacifier,” creating an ergonomic, approachable form that promotes jaw alignment and airway openness during sleep.

The unibody structure ensures durability, comfort, and correct positioning, helping users breathe better and sleep more deeply.

By balancing clinical function with user-friendly design, DORMIO offers a non-invasive, effective solution for millions affected by disrupted sleep.

It exemplifies how thoughtful design can support health and wellness—improving life one night at a time.



formeta





Market Ready

PAÓ - Posture Reminder & Wellness Device

PAÓ is a wearable wellness device designed to promote spinal health and improve posture—especially for desk-bound professionals. Created with Türker Acartürk, Formeta Design supported product architecture, housing integration, and mold development.

The device uses smart sensors to gently remind users to maintain proper posture, while also tracking movement and fitness activity.

A seamless shell, paired with a compact circuit interface, creates a balanced aesthetic that blends into daily life.

PAÓ is not just a tracker—it's a lifestyle tool that supports physical awareness and long-term health through subtle, intelligent design.



formeta





Concept Prototype

Wearable Vagus Nerve Stimulation Device

VAGUSTIM is a non-invasive wearable device designed to relieve migraines through vagus nerve stimulation (VNS). Developed in collaboration with Formeta Design, the product delivers gentle electrical impulses via ear electrodes to balance the autonomic nervous system and reduce migraine symptoms.

Worn comfortably around the neck, the device eliminates the need for bulky accessories—offering portable treatment for both home and clinical settings.

Our design approach focused on simplicity, comfort, and discreet use—transforming advanced wellness technology into an elegant everyday solution.

VAGUSTIM sets a new standard for wearable wellness devices—where therapeutic function meets modern lifestyle design.



formeta



WHY US?

We're proud to have collaborated with industry leaders and bold innovators.

Our collaborations span global corporations, startups, public institutions, and design-driven ventures.

Selected Collaborations

From concept to reality, we shape ideas that endure.

formeta

© 2025 - Formeta Design. All rights reserved.

Thank you for exploring our work.

Let's build what's next

info@formetadesign.com | +902163471213 | X2VJ+M6 Kadıköy, İstanbul

formeta

formetadesign.com

formeta